

# CDOT InRoads Place Plan Note Command



This document guides you through using the InRoads **Place Plan Note** command, which places annotation based on a combination of manual input and information extracted from InRoads geometry, surfaces, profiles, or cross sections. A major benefit of using this command is generation of annotation based on the engineering model and the ability to automate updating the annotation if the engineering information changes.

## Plan Notes

### Setting Defaults

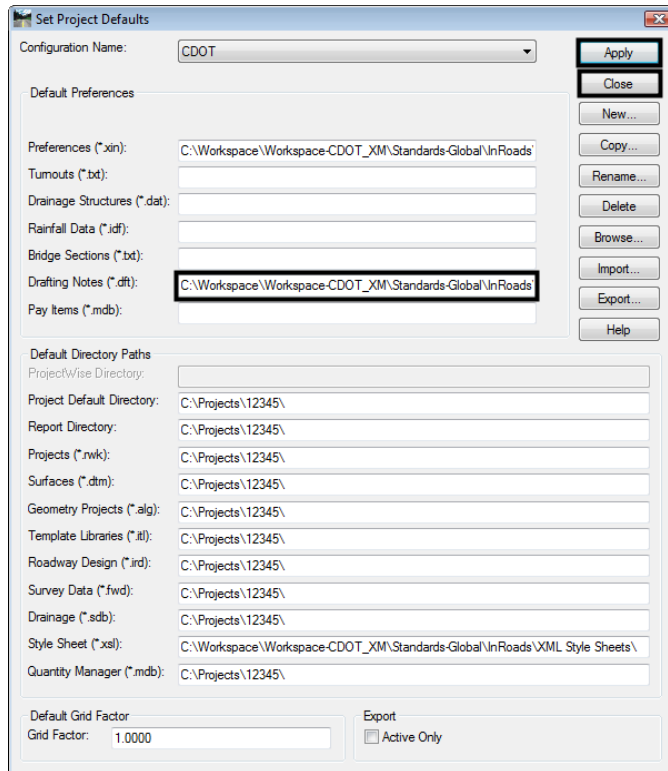
1. Launch both MicroStation and InRoads with the CAD file that requires annotation. This document follows:

*C:\Projects\12345\Design\Drawings\Reference\_Files\12345ROW\_Model.dgn*

2. From the InRoads menu, select **File>Projects Defaults**. Select the appropriate configuration name for the active project. If not already defined, the Drafting Notes field should be directed to:

*C:\Workspace\Workspace-CDOT\_XM\Standards-Global\InRoads\Notes\CDOT-Notes.dft*

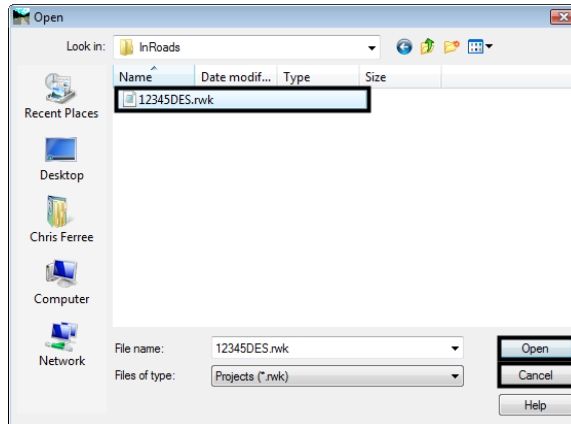
3. <D> **Apply** and **Close**.



## CDOT InRoads Place Plan Note Command.pdf

**Note:** Project specific DFT (drafting notes) files can be created and stored in the project directory structure. Creating this file will be discussed later in this document.

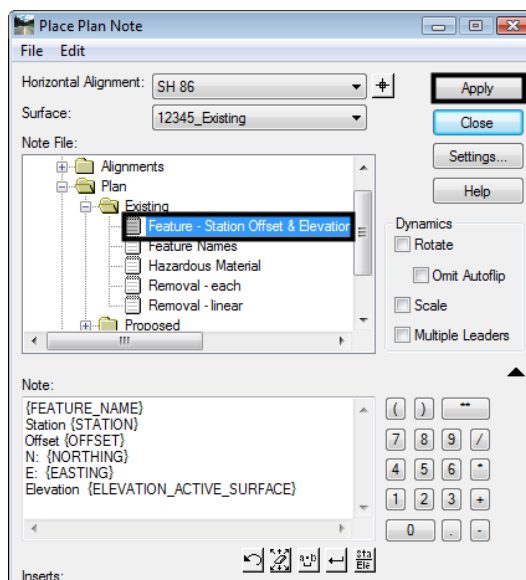
4. Open project related data files such as geometry projects and surfaces. If developed, choose the projects **RWK** file to open project related data. (**File > Open**). Select the appropriate project file and <D> **OK**. <D> **Cancel** to dismiss the **Open** dialog box.



## Placing Notes

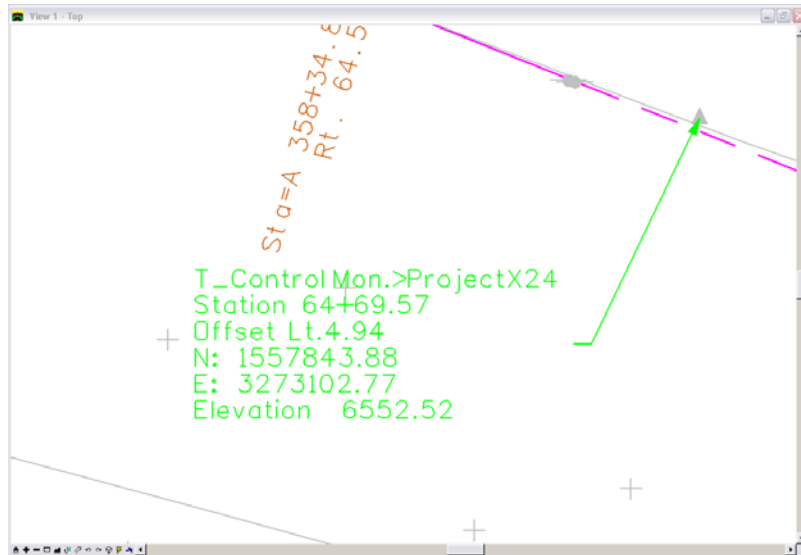
Annotation will be placed orthogonal to the MicroStation view. Consider the final orientation of plan sheets prior to placing notes.

1. Select **Drafting>Place Plan Notes**.
2. Expand the file tree structure (+) for **Plan > Existing**. Select **Feature - Station Offset & Elevation**, and <D> **Apply**.



## CDOT InRoads Place Plan Note Command.pdf

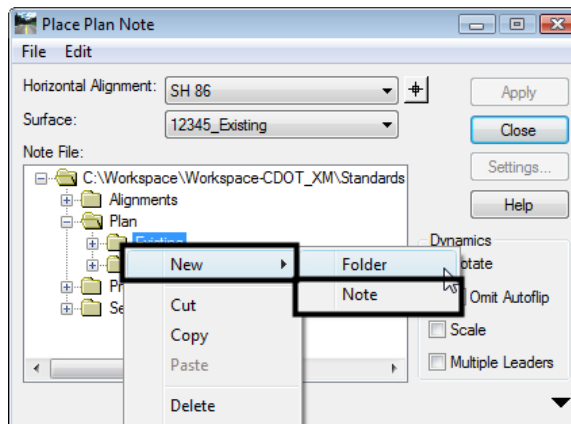
3. <D> on any element, <D> to accept, move mouse to desired location, and <D> again to insert note into drawing.



**Note:** In order for InRoads to generate annotation extracted from a surface feature, that feature must be displayed in the CAD file using the **Surface > View Surface > Feature** command. If text fields appear empty (non quantitative) it is more than likely due to the feature's properties. Either a description is not provided or the element is not displayed as a feature in the design file.

## Creating a Plan Note

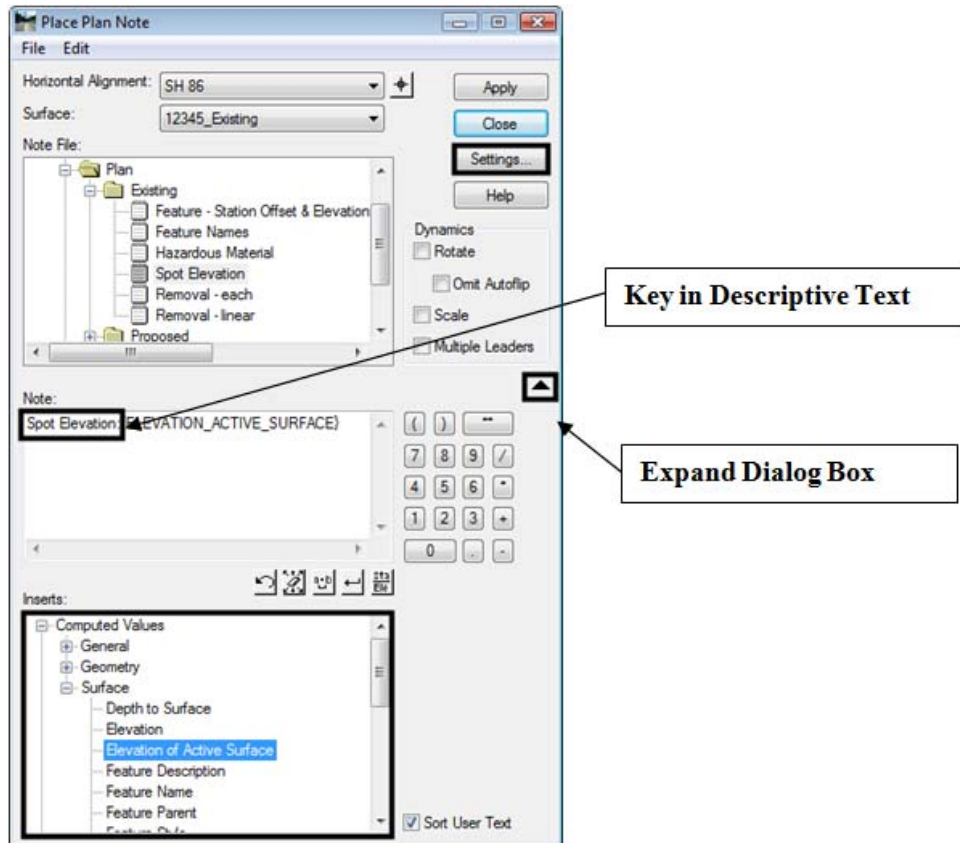
1. From the **Place Plan Note** dialog, <R> in desired folder to insert note. Select **New** and then **Note**.



2. Enter a name for the note (**Spot Elevation** for example) and hit **Enter** to complete.

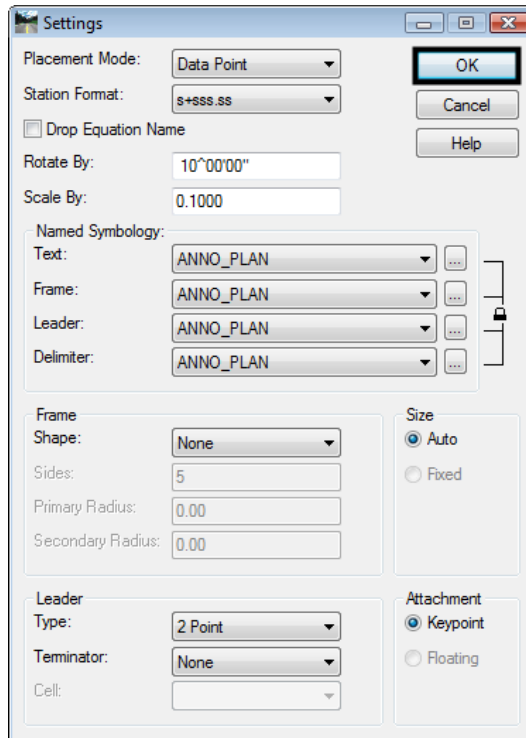
## CDOT InRoads Place Plan Note Command.pdf

3. Expand the dialog box using the downward arrow in the lower right of the dialog box. Use the keyboard to insert any descriptive text (**Spot Elevation:** for example) into the *Note:* field. Select **Computed Values > Surface > ELEVATION\_ACTIVE\_SURFACE** from the *Inserts* list box by <D> <D> on the item. <D> Settings.



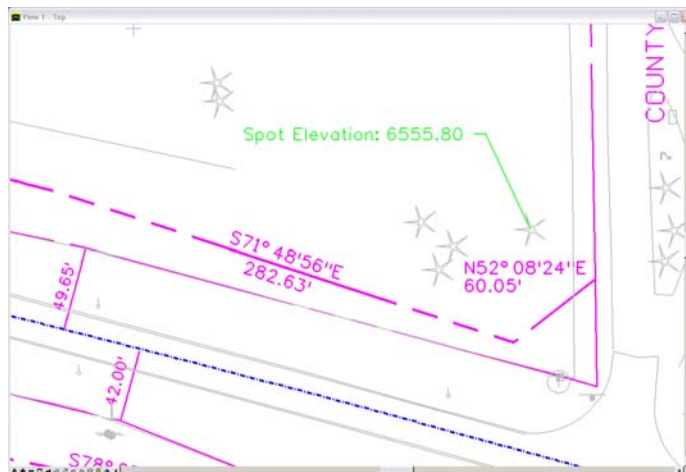
## CDOT InRoads Place Plan Note Command.pdf

4. In the **Settings** Dialog box choose desired settings then <D> OK.



**Note:** To keep note settings for future use, save the DFT file in a project specific folder (**Projects\#####Project\_Configuration**) by selecting **File>Save As** from the **Place Plan Note** dialog box. Saving to the CDOT workspace will not retain this information.

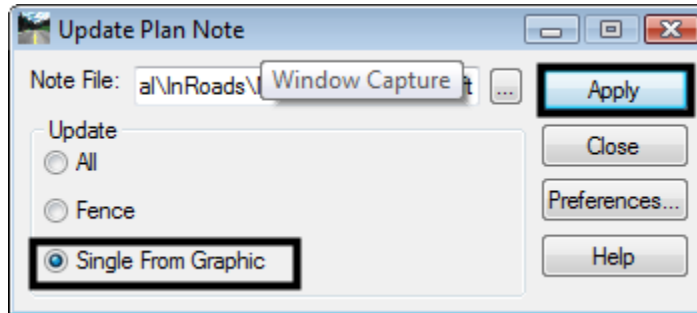
5. <D> **Apply** in the **Place Plan Note** dialog. <D> at any location in the MicroStation view, <D> to accept, move mouse to desired location, and <D> again to insert note into drawing.



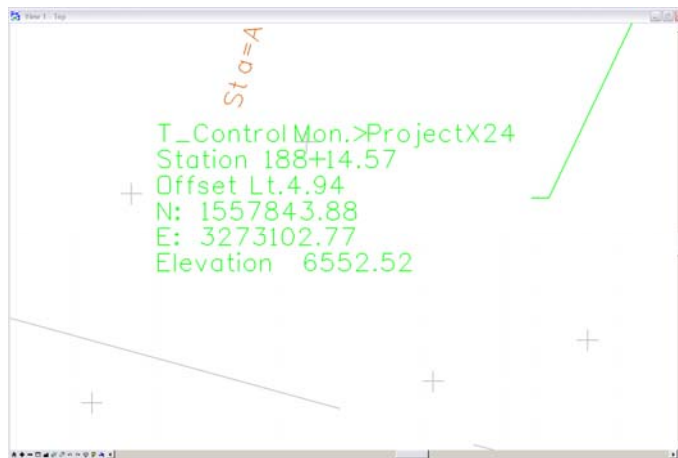
### Updating Plan Notes

If design information such as stationing, surface elevations or feature information changes, annotation placed with the **Place Note** command does not have to be deleted and regenerated. However, it does need to be updated. The following example shows the procedure assuming the stationing of an alignment has been modified.

1. Select **Drafting > Update Plan Note**. To update a single note, toggle **Single From Graphic** on. If multiple changes are desired, the **Update** modes **All** or **Fence** can be used. <D> **Apply**.



2. <D> on note to update, <D> again to accept. The note will automatically be updated with new stationing information.



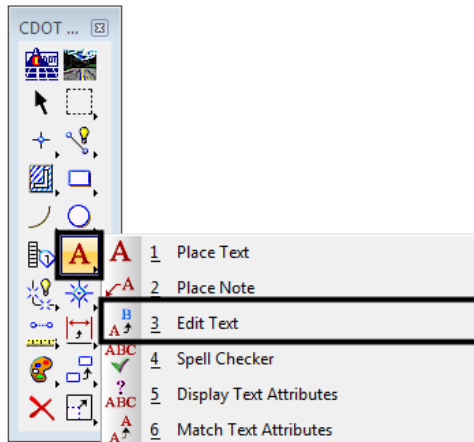
### Moving Notes

1. Select **Drafting > Move Note**.
2. <D> on note to be moved; <D> to accept selection; <D> to choose new location.
3. When using the **Drafting > Move Notes** command, the leader will stay associated with the original insertion point. Using the MicroStation Move command would reposition both the note and leader.

## CDOT InRoads Place Plan Note Command.pdf

### Editing Notes

1. From the Main Tool Bar in MicroStation choose **Edit Text**.



2. <D> on any note to edit the text in the Text Editor. <D> anywhere in MicroStation view to accept changes made to text.

**Note:** Editing text will disassociate values, disabling the automatic updates to text feature.